

Children and Young Person's Scrutiny Panel – 10th February 2021

Situational Awareness Report: COVID-19 in Merton

Dr Dagmar Zeuner, Director of Public Health

Merton Public Health Intelligence

4th February 2021

Enquiries: ben.bezuidenhout@merton.gov.uk

Page 1

Agenda Item 5

London overview

- Estimated cases rate positivity (1st Feb) in London is **2,460 per 100,000** (ONS)
- The current estimated London R value is between **0.6 and 0.9**.

Cases (28th January – 3rd February):

- 7 day case rate (all ages) **289.3 cases per 100,000** (down from 429.5 previous week).
- There were **621** new COVID cases in Merton.
- UK COVID variant: estimated to be responsible for **96%** of cases in Merton for the period 11th Jan - 24th Jan.

Deaths:

- There **43** new registered Merton COVID deaths for the week ending 22nd January. In total Merton has seen 376 deaths due to COVID.

Testing (26th January – 1st February / pillar 2 PCR tests only – this excludes Lateral Flow tests):

- 7 day testing rate **267.8 daily tests per 100,000**.
- 7 day test positivity increased to **14.5%**.

Positive cases per 100,000 across London boroughs

4th February 2021

For reporting period 21.1.2021 – 27.01.2021

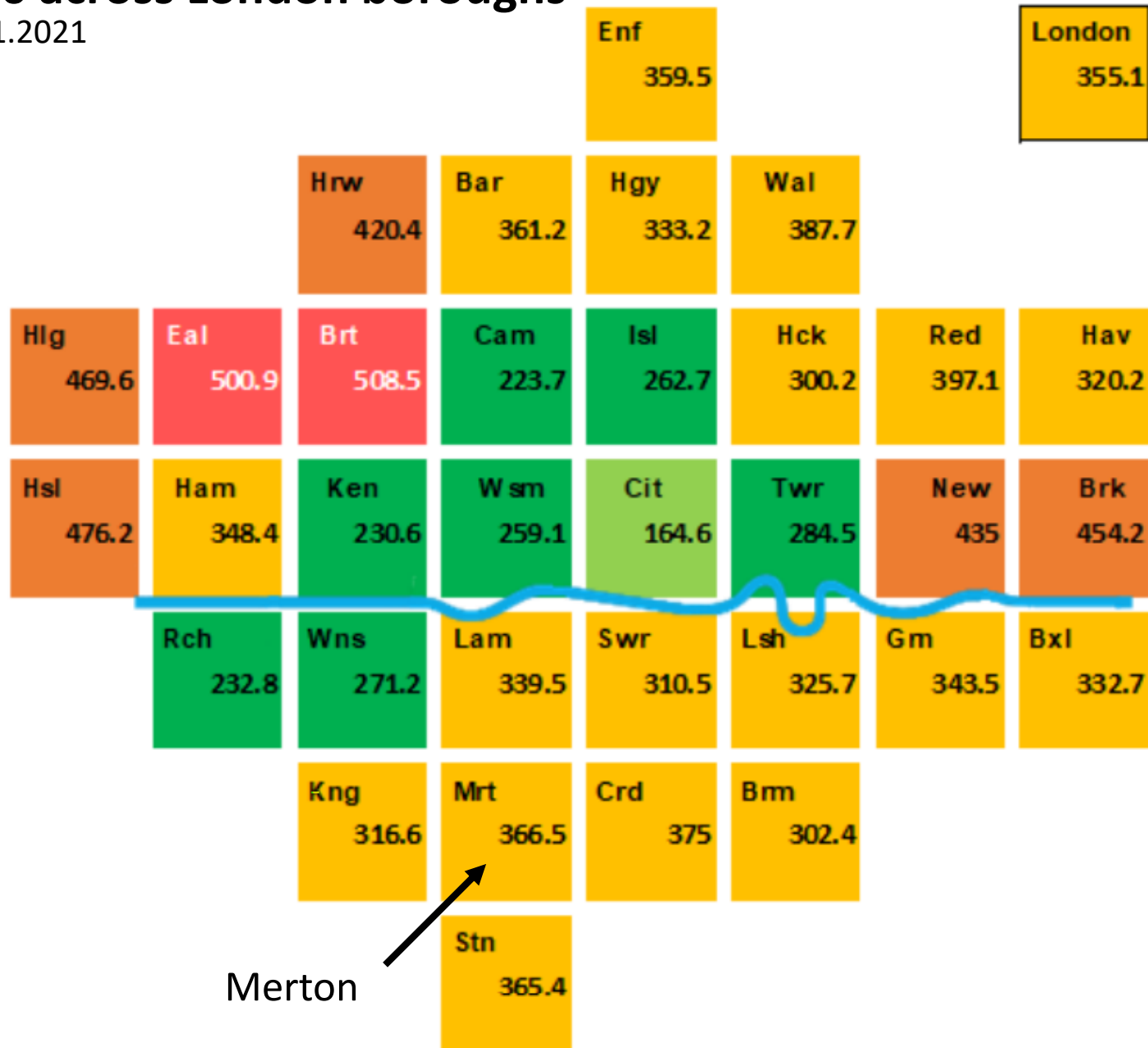
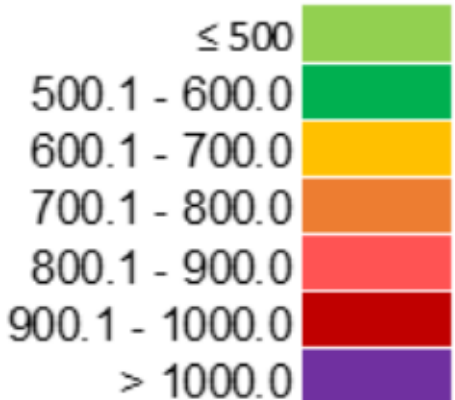
Source: PHE/CTOG slides

Positive tests per 100,000 population
(Pillar 1 + 2, PCR only)

Colour of box illustrates weekly cases per 100,000 for that week

Key: 7-day rate per 100,000

Page 3



Merton

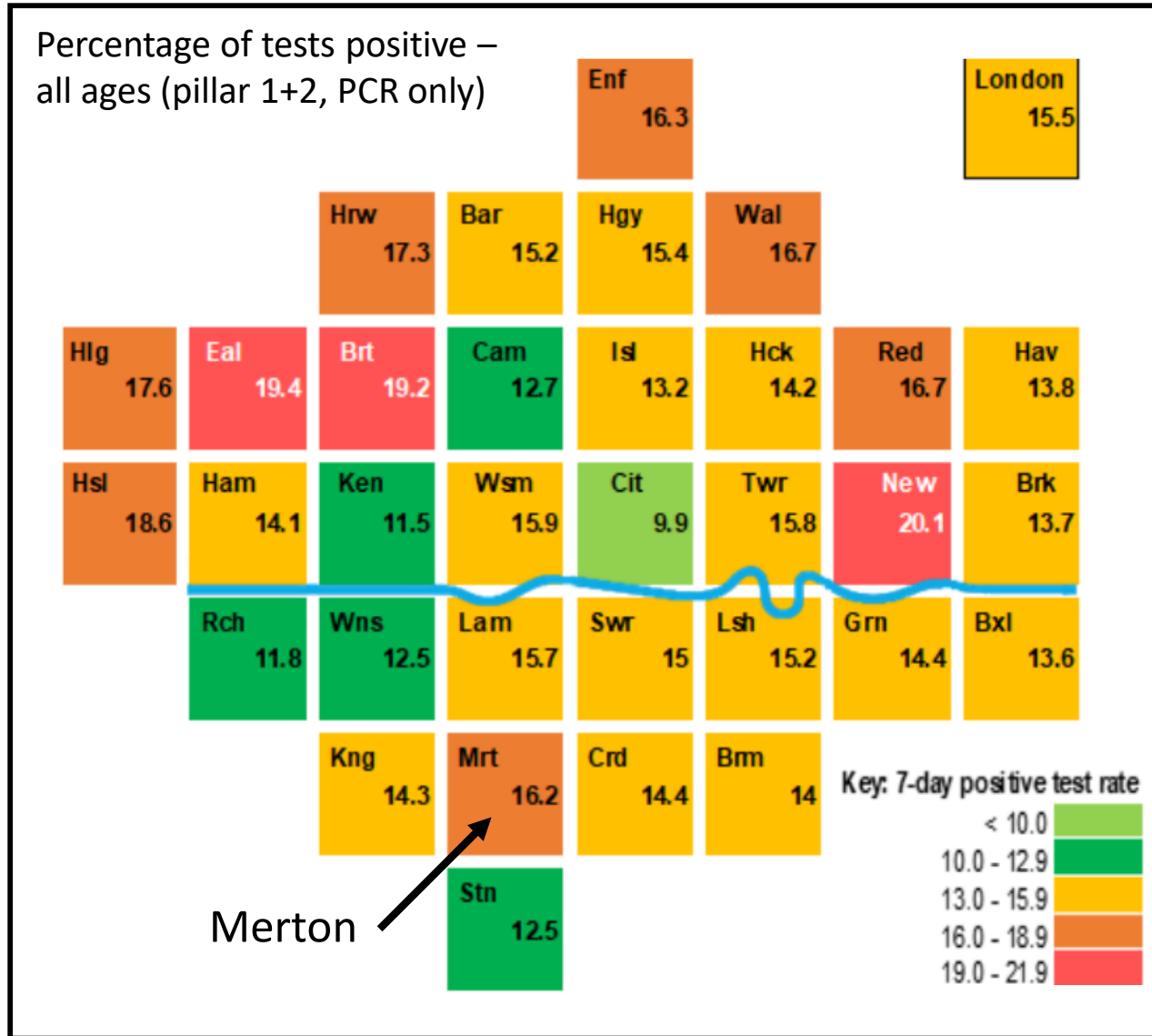
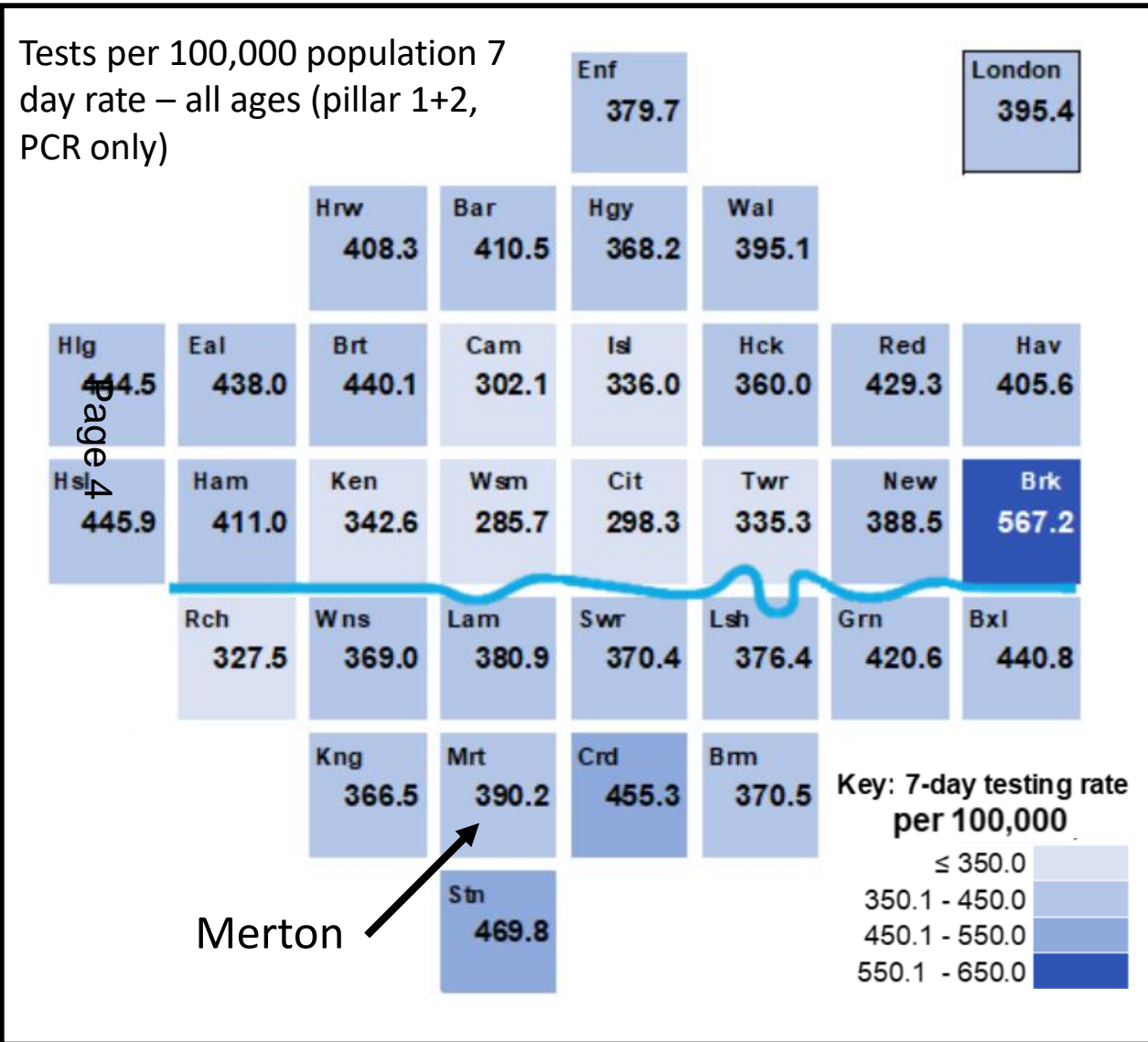
Individuals tested per 100,000 and test positivity across London boroughs

4th February 2021

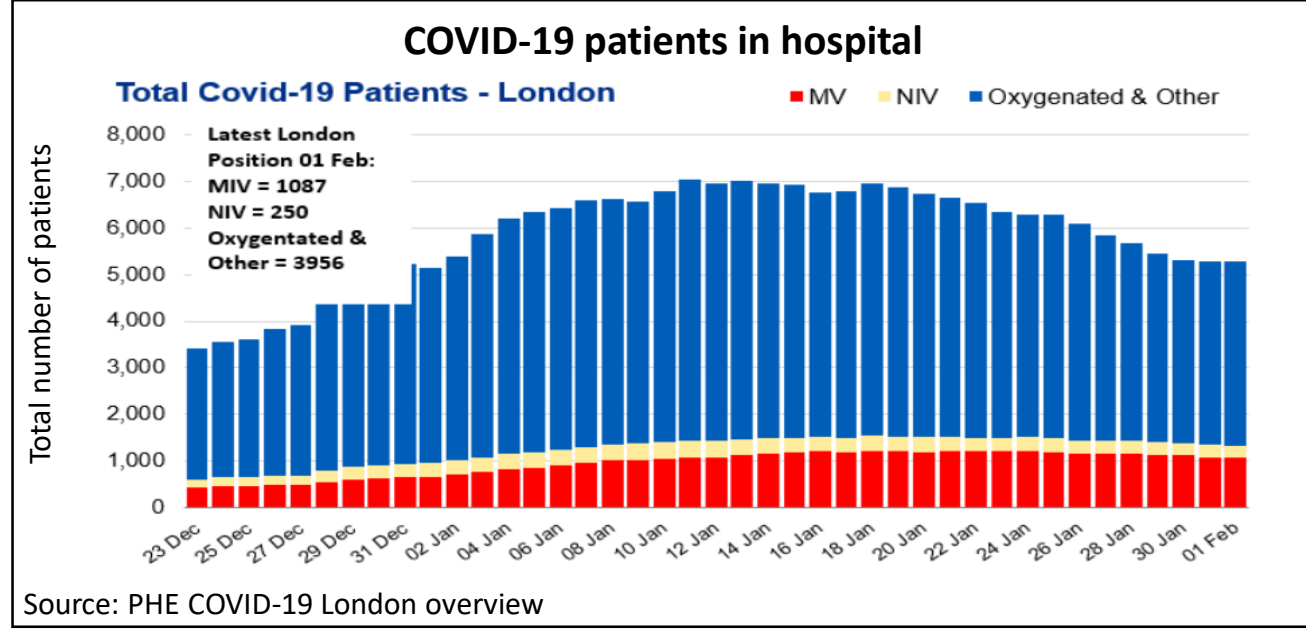
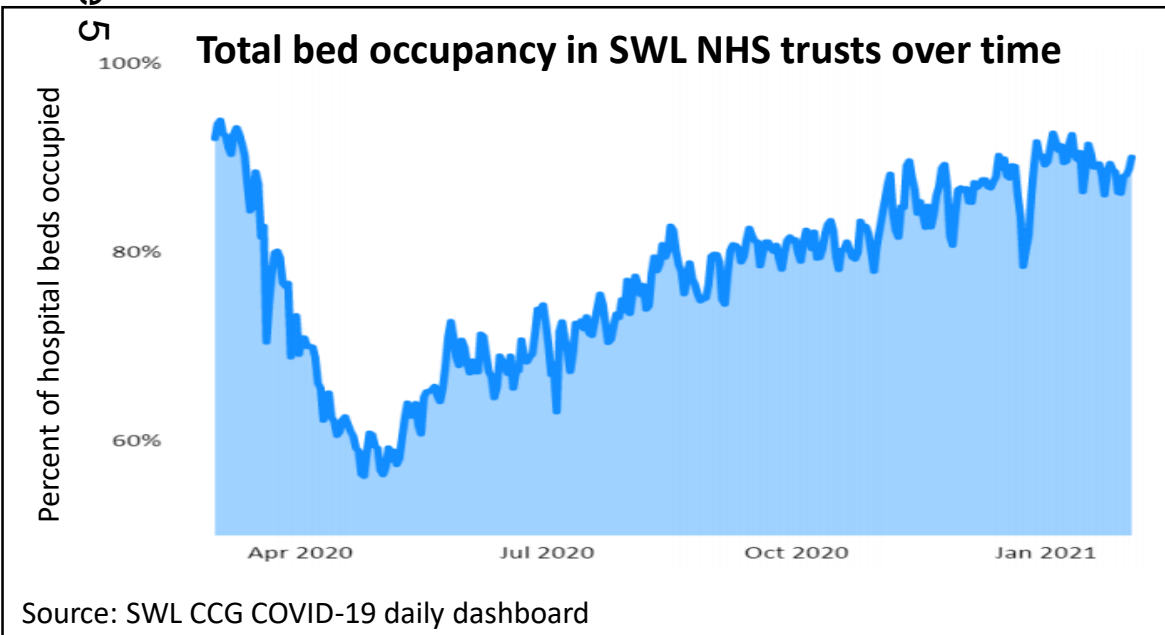
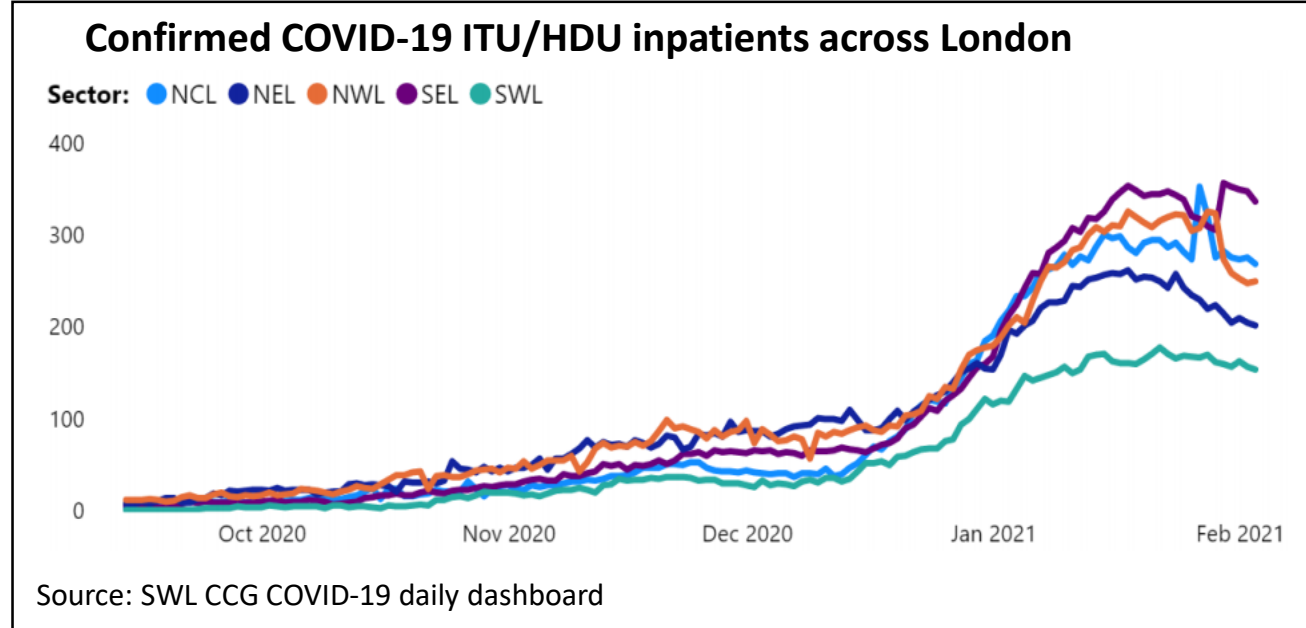
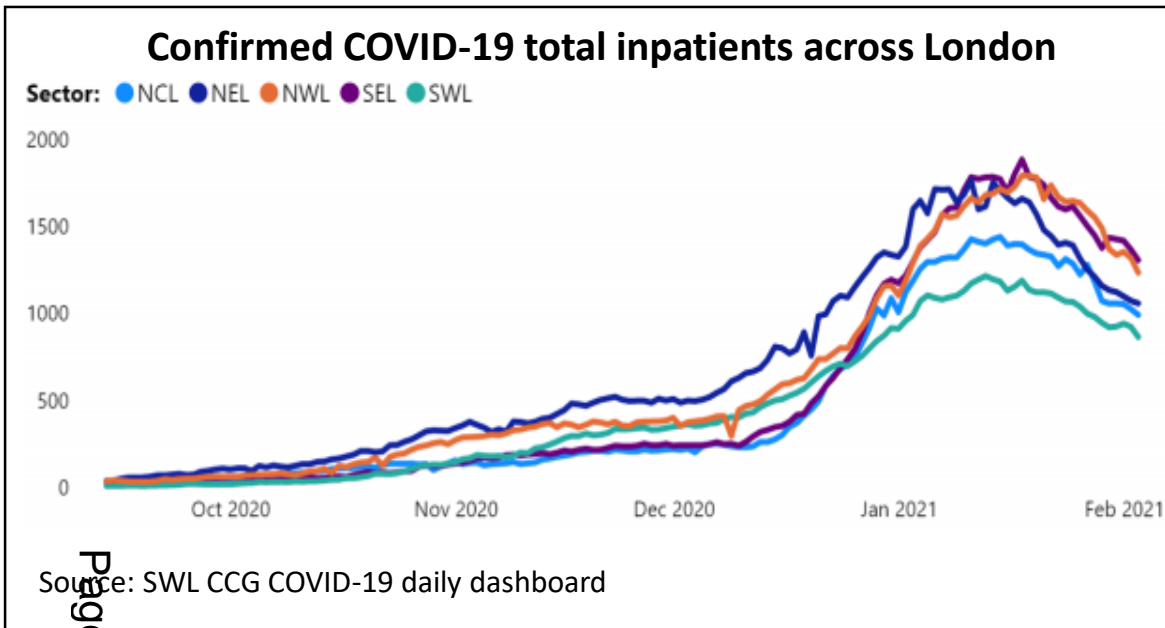
For reporting period 21.1.2021 – 27.01.2021

Source: PHE/CTTOG slides

Colour of box illustrates weekly cases per 100,000 for that week



COVID-19 and NHS-related indicators for London (all figures are numbers unless stated)



Page 5

Local analysis: COVID-19 cases and testing

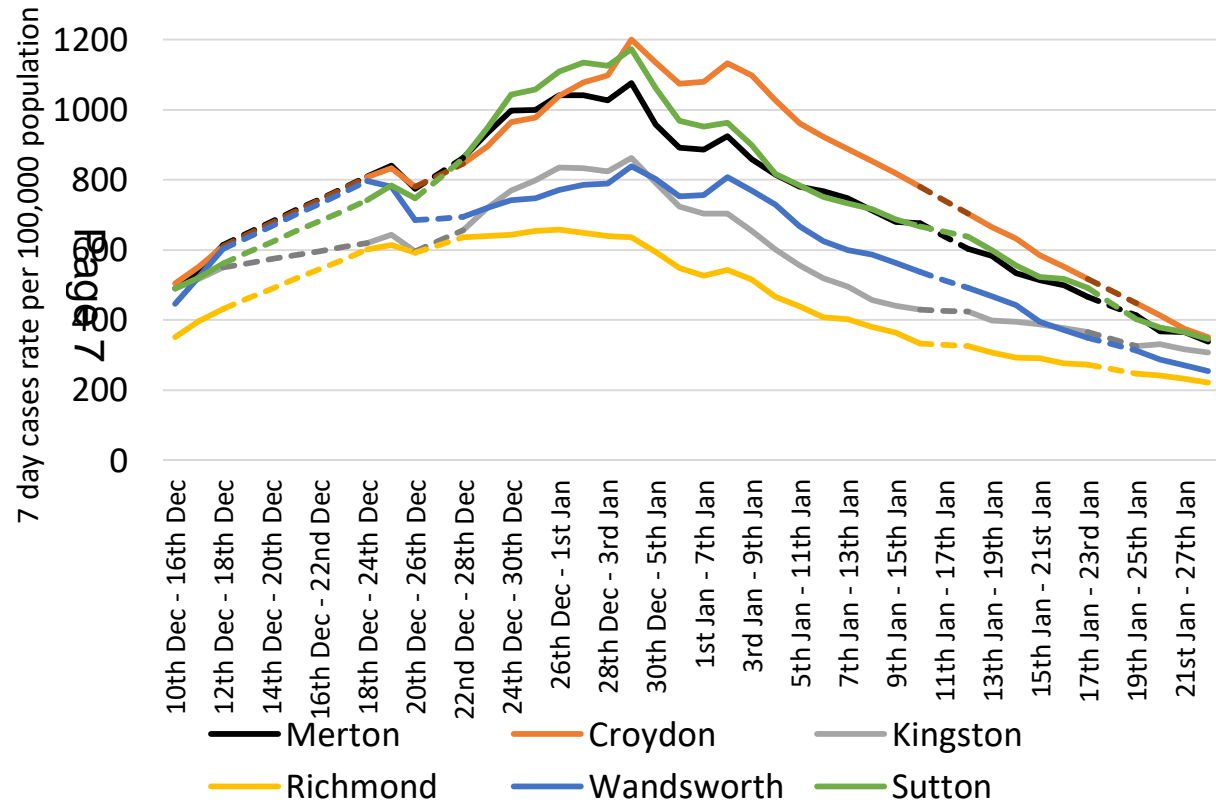
Page 6

Positive COVID-19 cases per 100,000 and age breakdown of cases among South West London boroughs

4th February 2021

Rolling 7-day rate of confirmed positive cases per 100,000 population in Merton compared to other South West London boroughs (Pillar 1 & 2, PCR + LFDs)

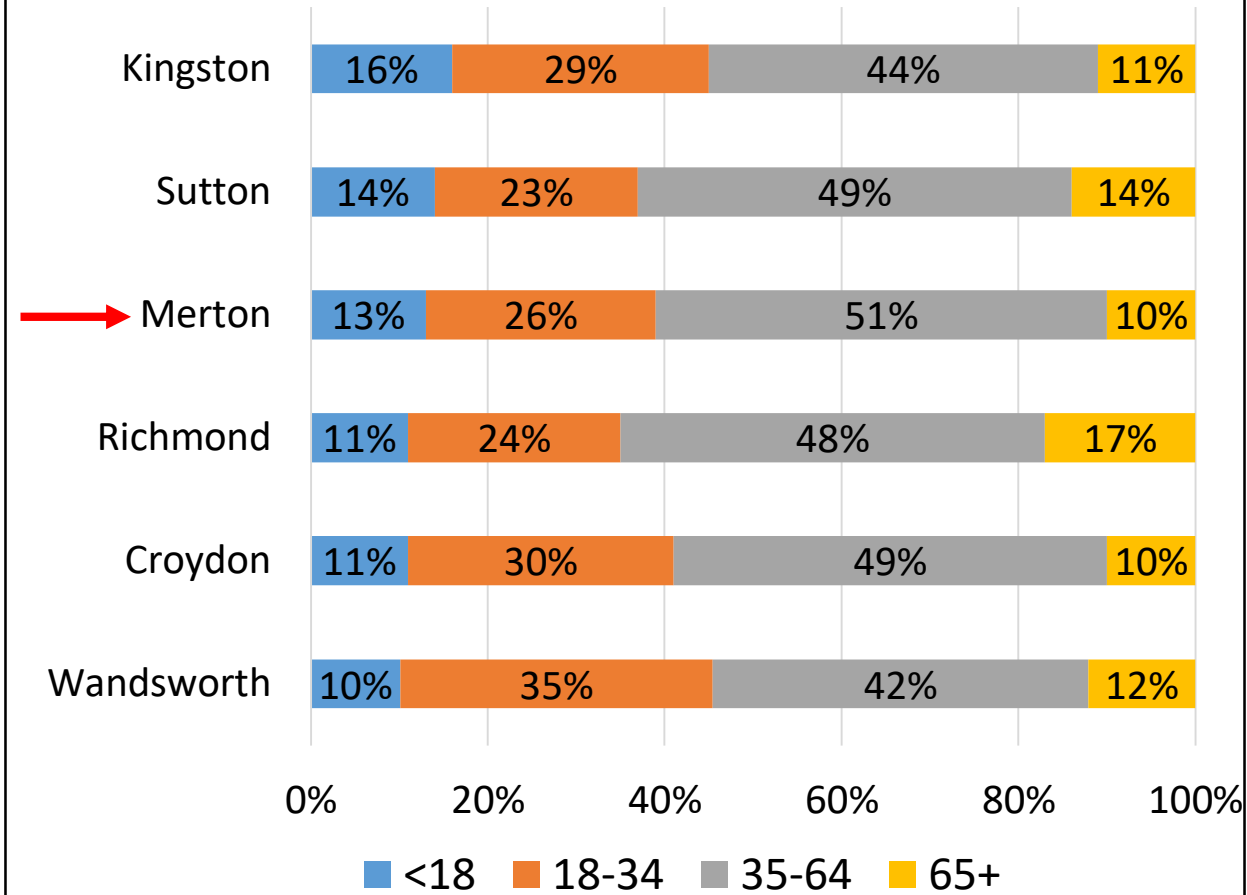
Key message: Merton has the third highest rate of cases among SWL boroughs



Please note there were reporting gaps in December and January. Dotted lines refers to periods when data was not available.

Source: PHE Daily Surveillance Report

Age breakdown of Pillar 1 + 2, PCR+LFD cases among SWL boroughs (17th Jan – 23rd Jan)



Source: PHE LA reports

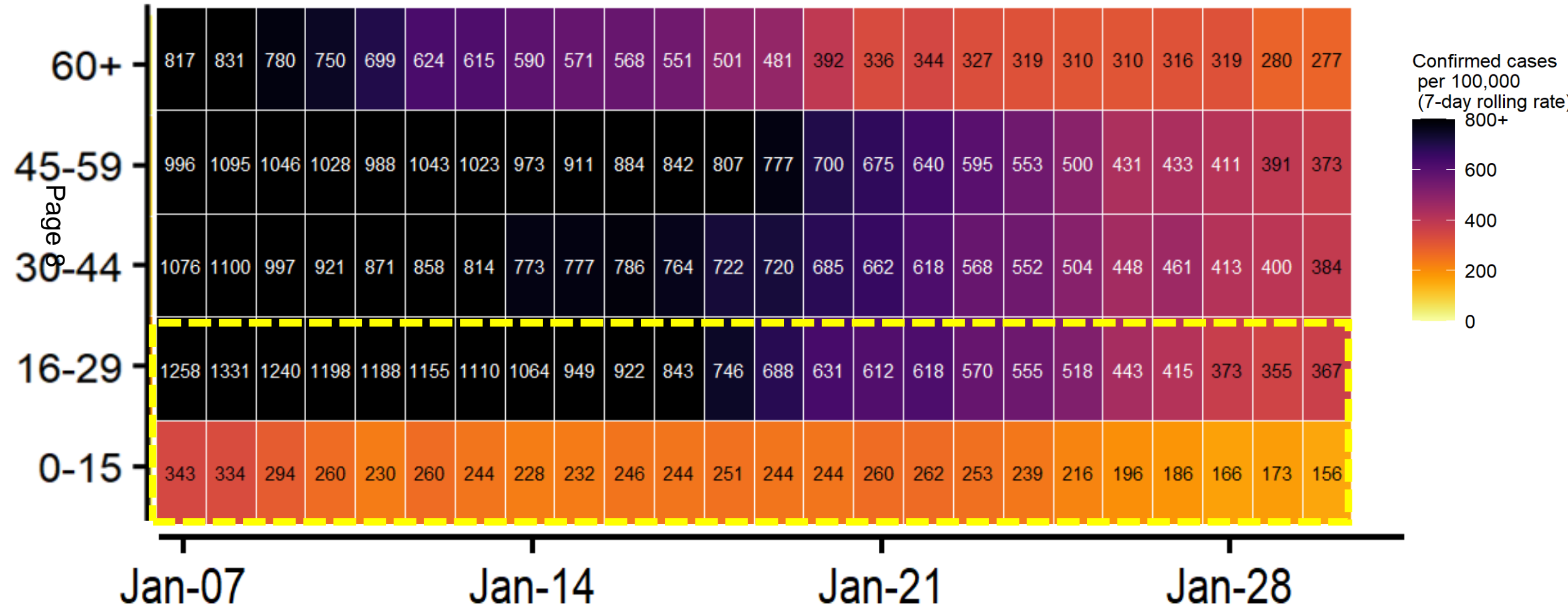
COVID-19 cases rates in Merton by age group heat map over time

7-day rolling total case rates per 100,000 (Pillar 2 PCR only)

4th February 2021

Source: PHE/PHEC Daily Report

Reporting frequency: Daily



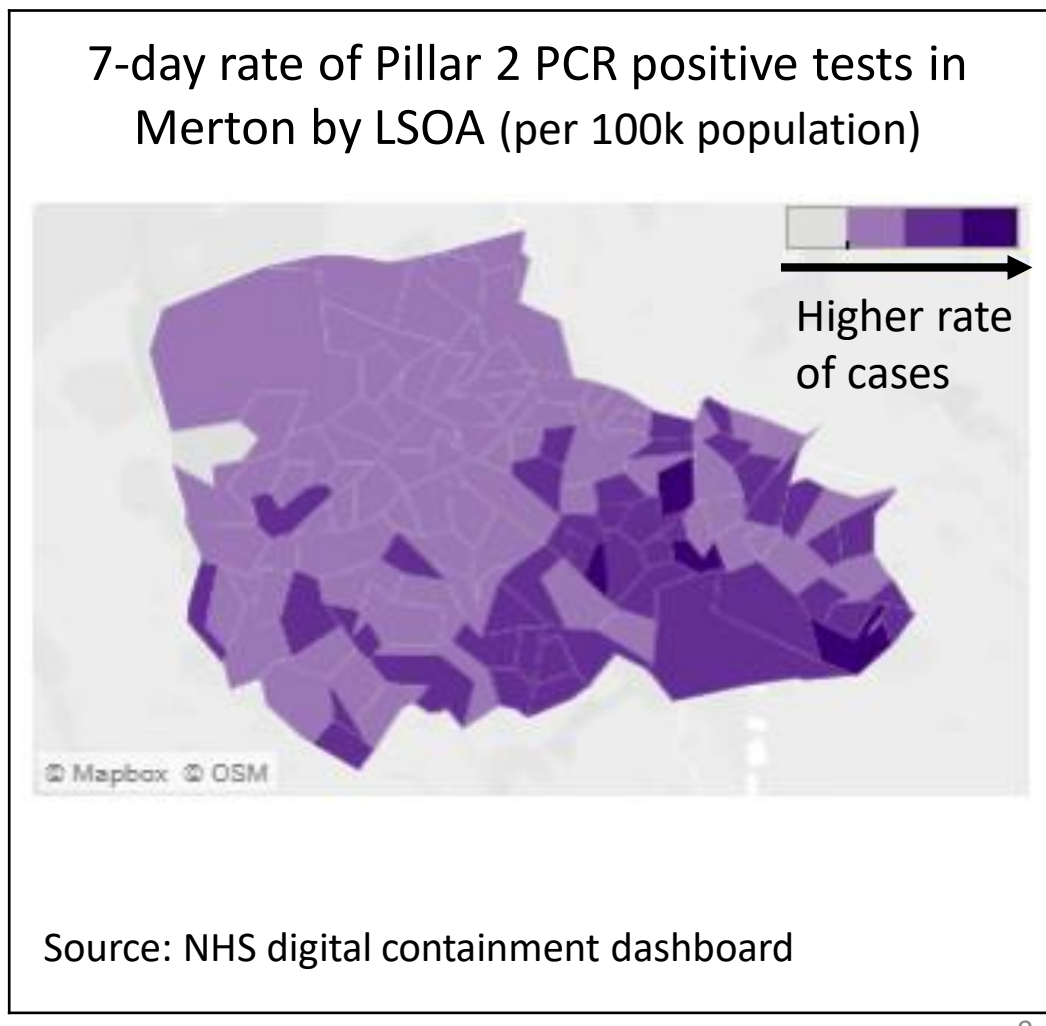
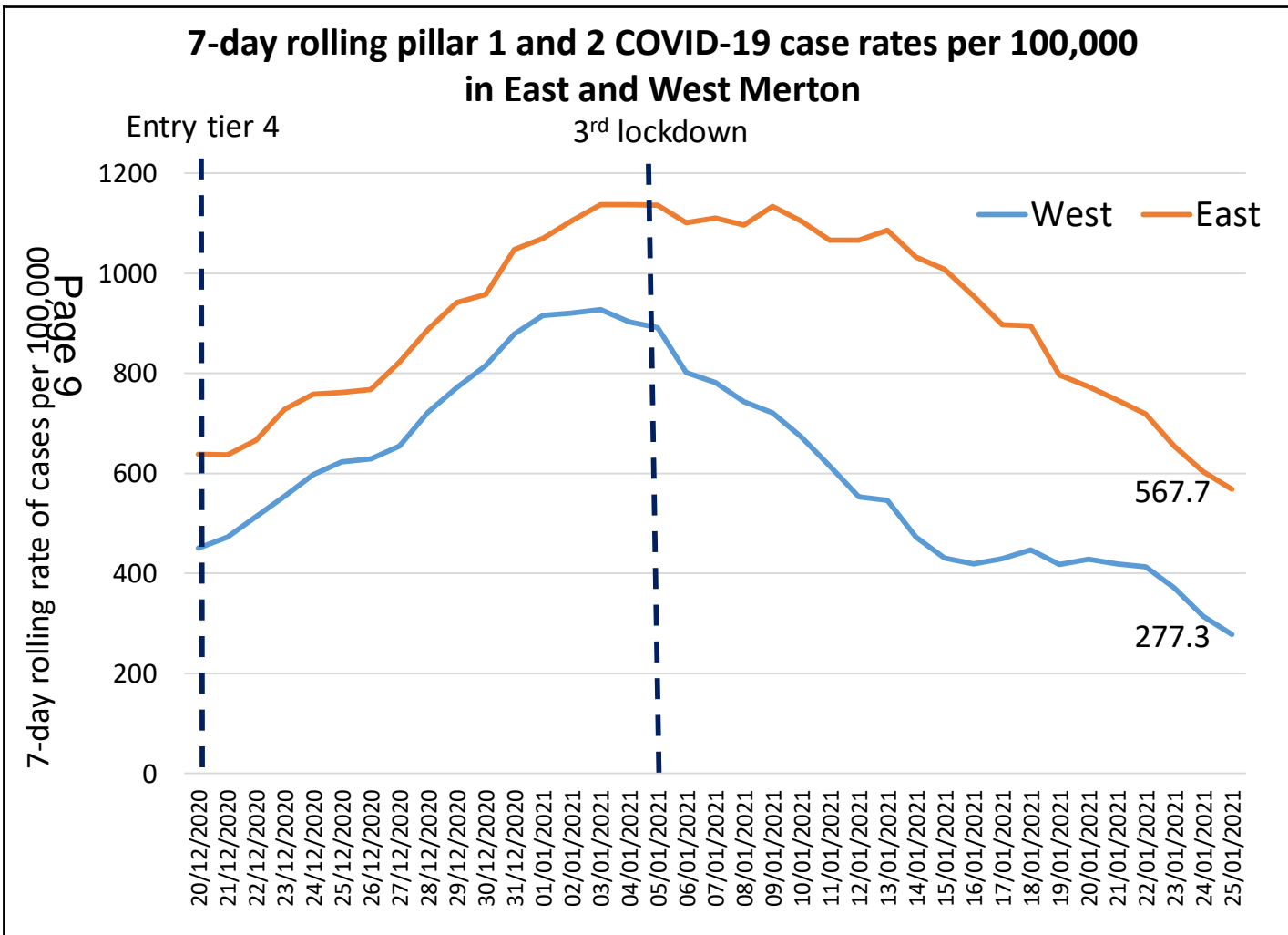
Source: PHE/Merton LA report

Rate of Pillar 2 PCR confirmed COVID-19 cases in East and West Merton

Source: LSAT daily line list

Key Message:

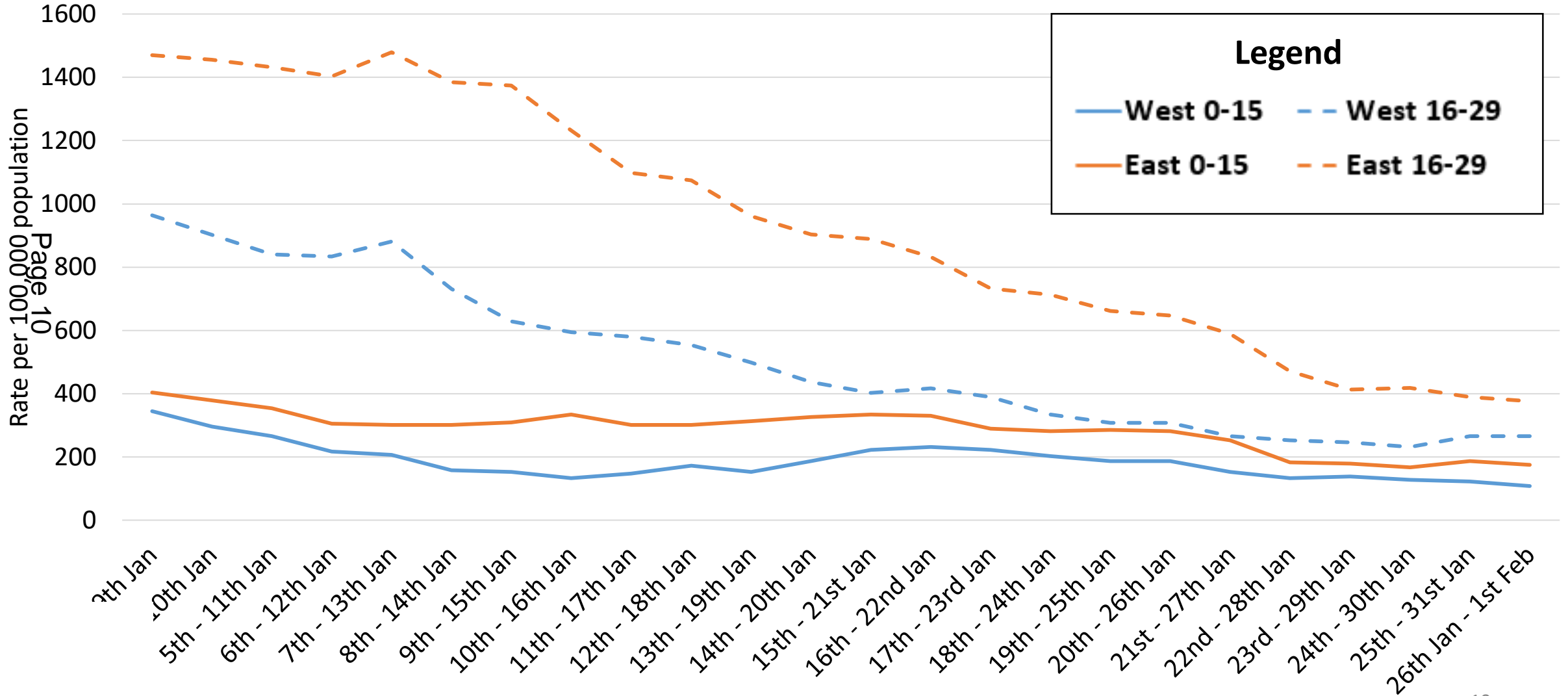
- East Merton has higher rates of cases than West Merton.



COVID-19 rate of cases per 100,000 7-day rolling rate among younger age groups in East and West Merton (Pillar 1+2, PCR+LFDs)

Source: PHE/PHEC Daily Report

Reporting frequency: Daily



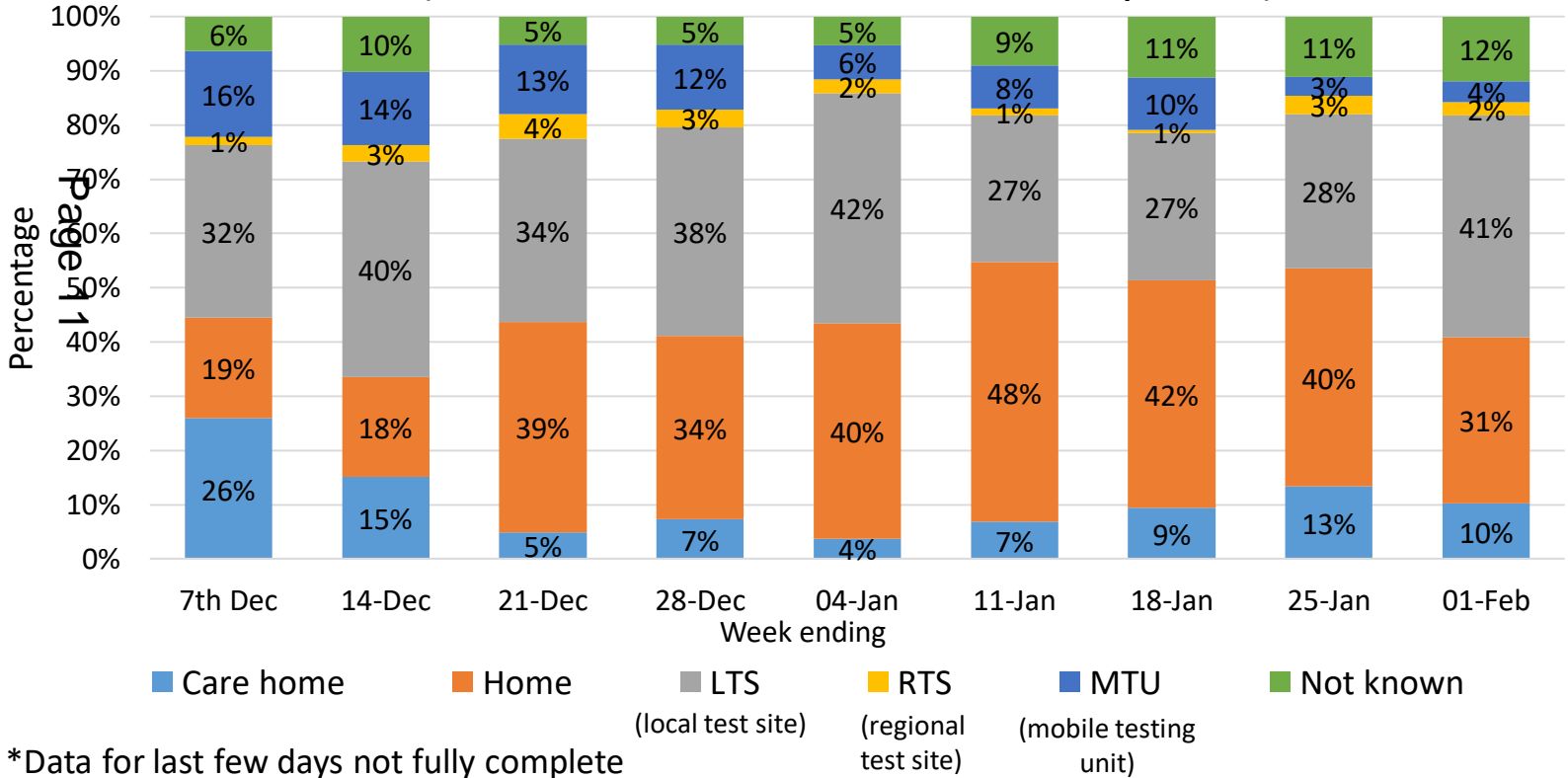
Covid-19 PCR Tests from Pillar 2 by Merton Residents overview

4th February 2021

Key Messages:

- Local testing sites (LTS) ranged from 27% to 42% of Merton resident (1st Dec 2020 – 1st Feb 2021).
- MTU's account for 3-16% of Merton resident tests and 9.5% over the 9 week time period.

PCR tests among Merton residents by test setting
(1st December 2020 – 1st February 2021)

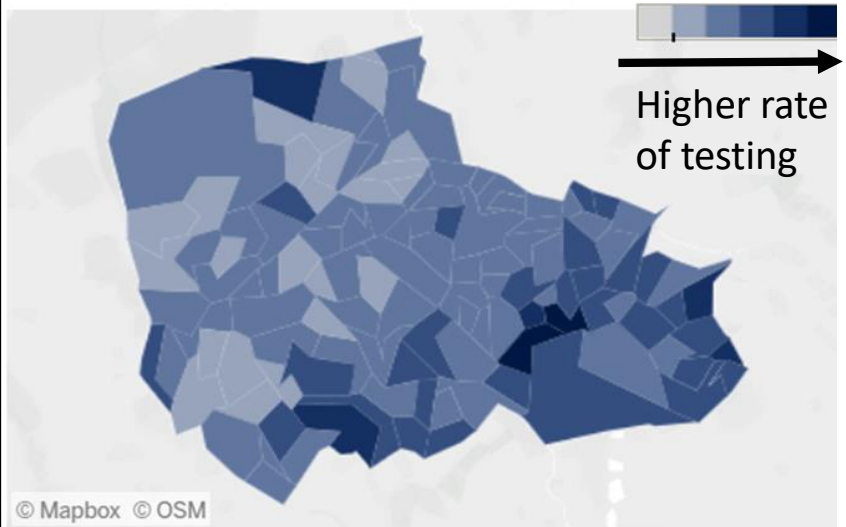


*Data for last few days not fully complete

Note: Only includes pillar 2 and PCR tests and is for tests and not persons, so multiple tests will likely exist

Source: PHE Power BI tool

7-day rate of total Pillar 2 PCR tests in Merton by LSOA (per 100k population)
(26th Jan – 1st Feb)



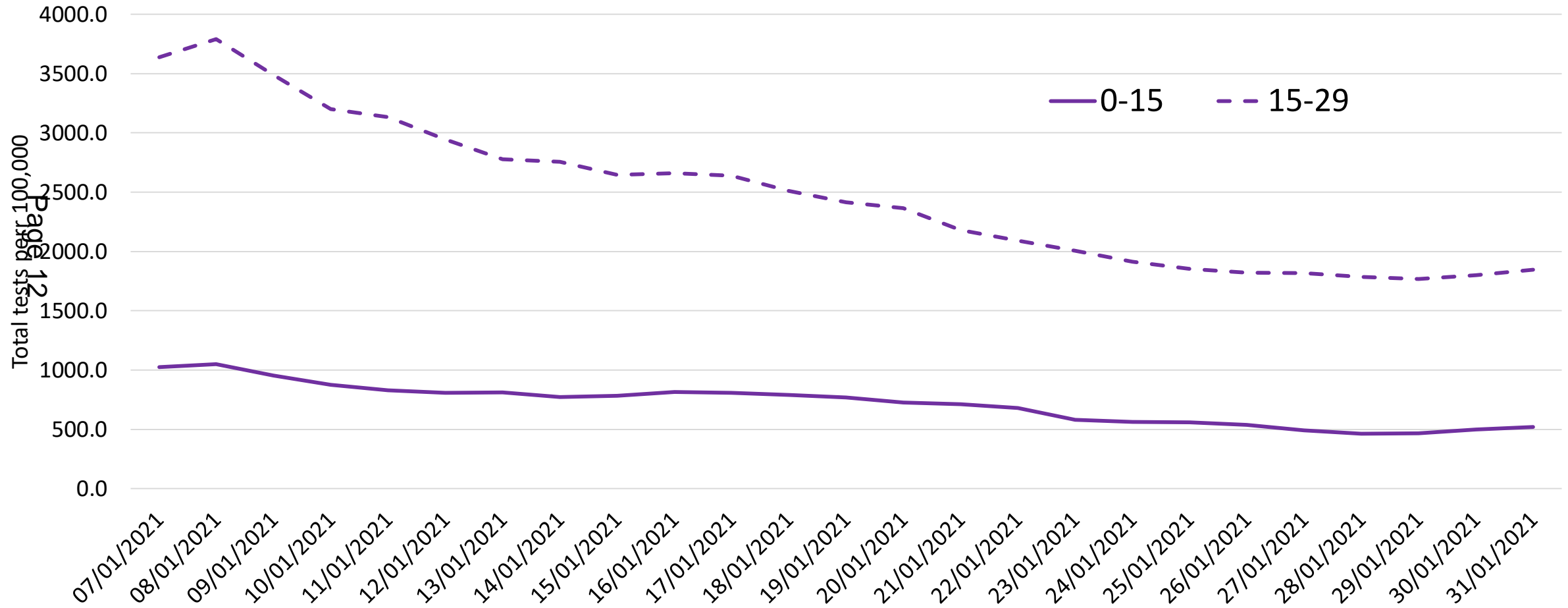
Source: NHS digital containment dashboard

Pillar 2 PCR 7-day rolling test rate per 100,000 among Merton residents

0-15s and 15-29s

4th February 2021

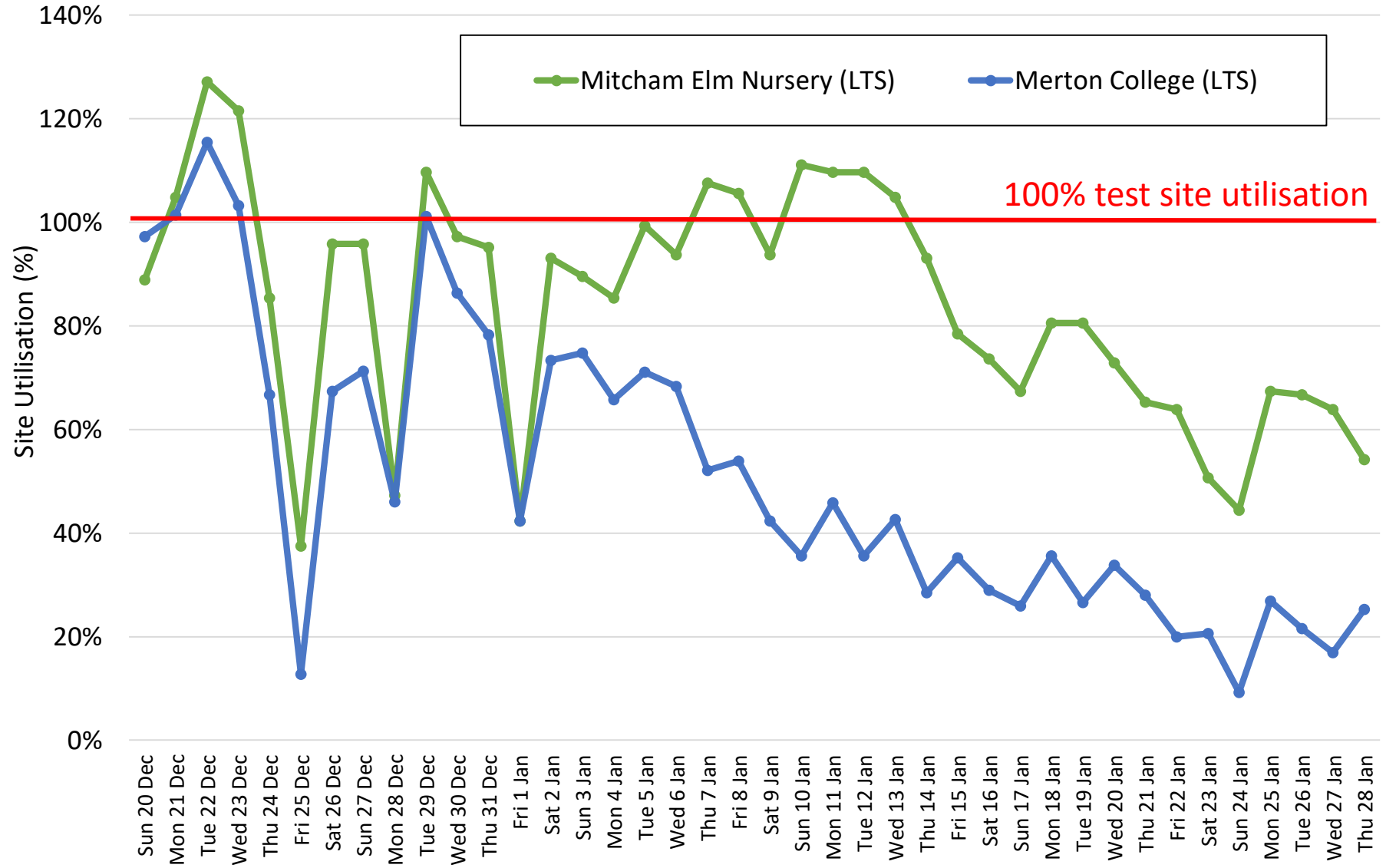
Source: PHE PowerBI



Covid-19 PCR LTS Utilisation (20th Dec 2020 – 28th Jan 2021)

Key Messages:

- Local site capacity:
Mitcham Elm: 144;
Merton College: 432;
(Source: RSP Merton).
- Utility at both LTS declined since early (Merton College) to mid (Mitcham Elm) January and are well within capacity.
- Average for January:
 - Mitcham Elm (81%)
 - Merton College (39%)



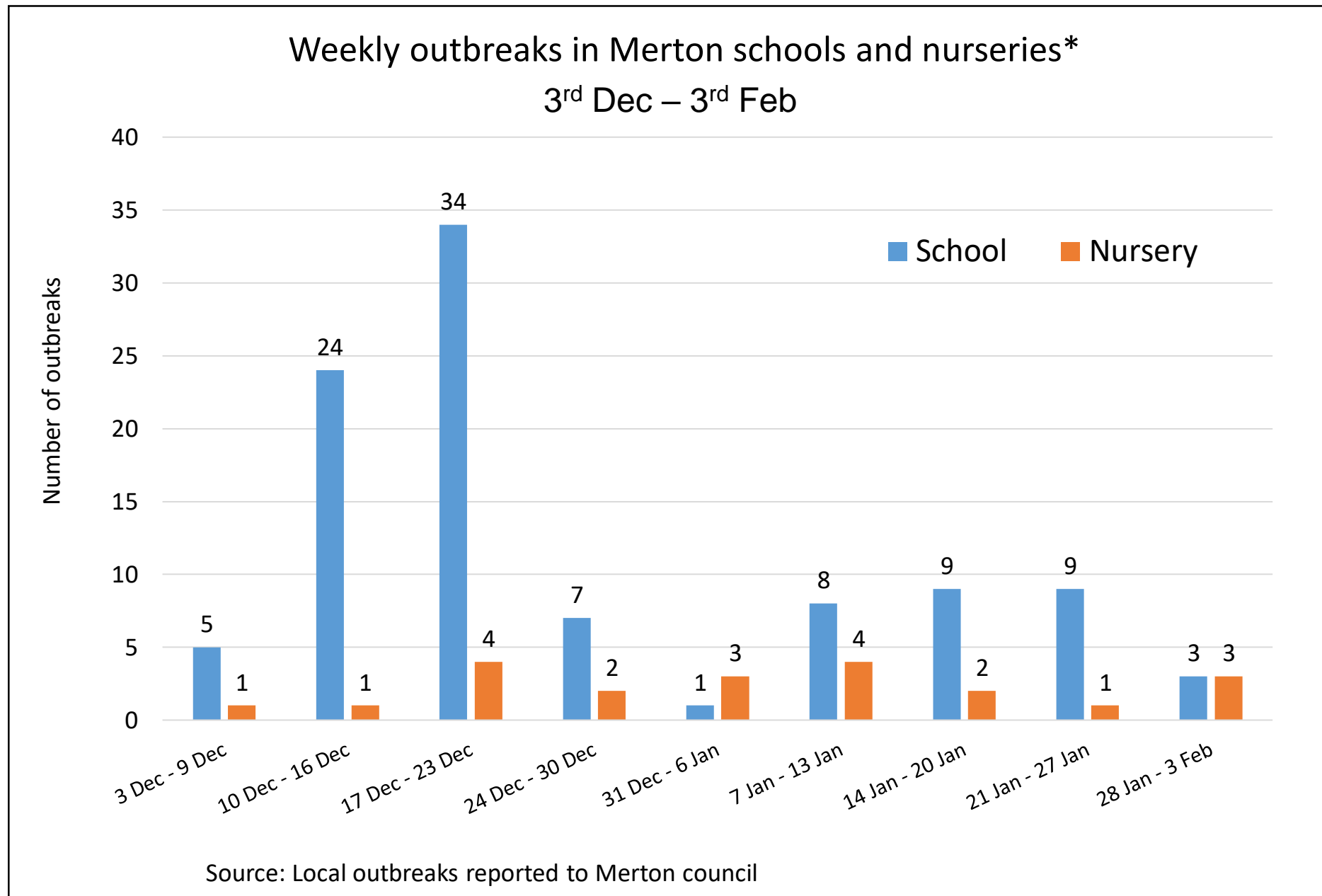
Sources: Tests: Regional Dashboard (DHSC) / Capacity: RSP - LB Merton

Key messages

- There have been fewer outbreaks in Merton schools in January compared to December due to Christmas holidays and new lockdown.

Page 14

*Outbreak defined as setting with two or more confirmed cases.



Merton schools update

Page 15

Schools overview and attendance in Merton

Key messages

Update

- Since 4th January all primary and secondary schools in Merton are only open to vulnerable children and the children of key workers.
- Special schools have been asked to remain open to all pupils.
- Following clarification by the Government in the second week of term, primary schools have also opened their Nursery classes to all children.
- Schools continue to look to their risk assessments to ensure that measures are in line with government guidance to mitigate risk.
- Schools in the Pollards Hill ward continue to operate as per the rest of Merton in line with national lockdown guidance, with one-off enhanced testing taking place.
- The Prime Minister has announced that schools will not open fully before 8th March. Schools will be given at least two weeks notice of the confirmed date.

Attendance figures

- Attendance in primary schools has been increasing steadily in many schools over January.
- **15/44** primary schools now reporting over 80 pupils attending on a daily basis.
- Face to face attendance in secondary schools continues to hover at around **65%**.

Testing overview in Merton schools

Key messages

Secondary schools

- In line with national guidance, Merton secondary schools used LFDs to test all students who are attending face to face on their return after the Christmas holidays.
- They are testing staff twice weekly.
- Testing in secondary schools is taking place on site.

Primary schools

- Merton primary schools are testing staff on a weekly basis using home LFD kits.
- In addition, going beyond the national guidance, a number of schools are continuing to test students attending face to face on a weekly basis.

Page 4

This page is intentionally left blank